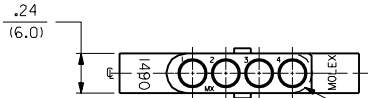


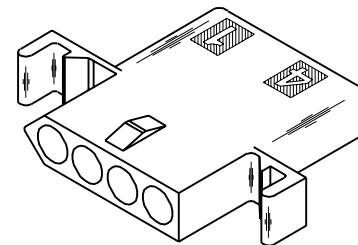
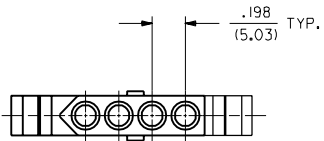
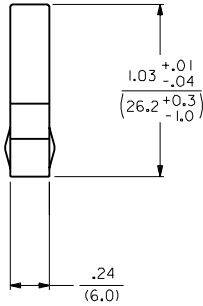
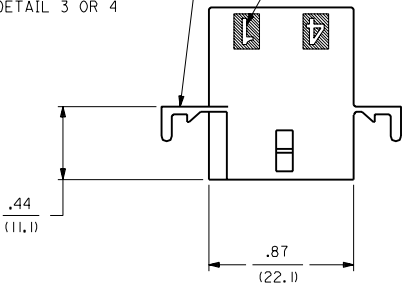
RECEPTACLE



ALTERNATE CONFIGURATION

OPTIONAL MOUNTING EAR (2 PL.)
(STD. MOUNTING EAR SHOWN)
SEE DETAIL 3 OR 4

CIRCUIT I.D. \triangle



RECEPTACLE HOUSING

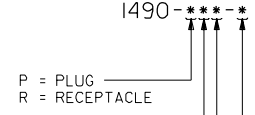
| LTR. | REVISIONS | LTR. | REVISIONS |
|------|-----------|------|-----------|
| | | | |
| | | | |
| | | | |
| | | | |
| | | | |
| | | | |
| | | | |
| | | | |
| | | | |

| | |
|--|--------------|
| DIMENSIONS SHOWN (METRIC) INCH | |
| UNLESS OTHERWISE SPECIFIED TOLERANCES: ANGULAR \pm .004 TO | |
| INCH | METRIC |
| 3 PLACE \pm .010 | --- |
| 2 PLACE \pm .014 | \pm 0.25 |
| 1 PLACE --- | \pm 0.35 |
| DRAFT WHERE APPLICABLE MUST REMAIN WITHIN DIMENSIONS | |
| DRW. BY: CEP | CHKD. BY: RW |
| APP'D. BY: RAS | SCALE: 2 : 1 |

| | |
|--|---------------------|
| REVISIONS ONLY ON CAD SYSTEM | |
| TITLE: .093/(2.36) HOUSING, PLUG AND RECEPTACLE, 4 CKT. \pm .198/(5.03) CTRS. | |
| MOLEX INCORPORATED | SHEET NO. 2 |
| LITTLE ROCK, AR 60532 U.S.A. | DATE 3/10/88 |
| PART NO. SD-1490-0 | DRWG. NO. SD-1490-0 |
| SEE CHART | |
| FILE NAME: SD1490X2.DWG | DIV. CP |
| THIS DRAWING CONTAINS INFORMATION THAT IS PROPRIETARY TO MOLEX INC. AND SHOULD NOT BE USED WITHOUT WRITTEN PERMISSION. | |

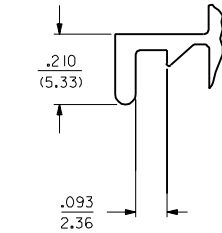
| PLUG | | RECEPTACLE | |
|-------------|-----------|------------|-----------|
| PART NO. | ENG. NO. | PART NO. | ENG. NO. |
| 03-09-2041 | I490-P | 03-09-1041 | I490-R |
| 03-09-2042 | I490-P1 | 03-09-1042 | I490-R1 |
| 03-09-7041 | I490-PBK | 03-09-6041 | I490-RBK |
| 03-09-7042 | I490-P1BK | 03-09-6042 | I490-R1BK |
| PRELIMINARY | I490-P2 | 03-09-1043 | I490-R2 |
| 03-09-3042 | I490-P1BU | 03-09-6043 | I490-RBU |
| | | 03-09-6045 | I490-RGN |

LEGEND:

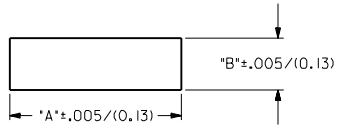
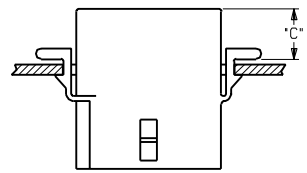


- BLANK = WITH STANDARD EARS
 1 = WITHOUT EARS
 2 = WITH PREBENT EARS, PER DETAIL 4

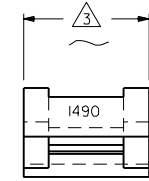
- COLOR: BLANK=NATURAL COLOR
 AM=AMBER BK=BLACK BU=BLUE
 BN=BROWN CY=GRAY GN=GREEN
 OR=ORANGE RD=RED YW=YELLOW
 BLANK = MATERIAL CODE A



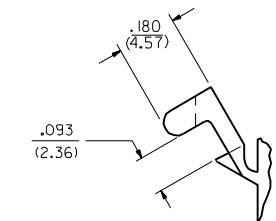
DETAIL 3
 .093/(2.36) STANDARD MOUNTING EAR
 (SCALE 4:1)



| HOUSING | DIM. "A" | DIM. "B" | DIM. "C" |
|------------|---------------|-------------|-----------|
| PLUG | 1.131/(28.73) | .375/(9.52) | .36/(9.1) |
| RECEPTACLE | 1.038/(26.36) | .312/(7.92) | .37/(9.4) |



DETAIL 4
 .093/(2.36) PREBENT MOUNTING EAR
 (SCALE 4:1)



NOTES:

- MATERIAL CODES:
A = NYLON 6/6, 94V-2
- THIS PART COMPLIES WITH MOLEX PRODUCT SPEC. 02-09.
- FOR DIMENSION SEE SHEET 1 AND 2.
- CIRCUIT I.D. NUMBERS ON HOUSING APPEAR ON PARTS FROM TOOLS BUILT AFTER 8/7/91.

| | | | | | |
|--|--|--|--|--|--|
| DIMENSIONS SHOWN (METRIC) INCH | | ▽ = 0 ▽ = 0 | | REVISE ONLY ON CAD SYSTEM | |
| UNLESS OTHERWISE SPECIFIED TOLERANCES ARE AS FOLLOWS | | TITLE | | | |
| | | .093/(2.36) HOUSINGS, PLUG AND RECEPTACLE, 4 CKT., .198/(5.03) CTRS. | | | |
| | | MOLEX INCORPORATED | | SHEET NO. 3 DATE 3/10/88 | |
| | | LITTLE ROCK, AR 60532 U.S.A. | | PART NO. SD-1490-* | |
| | | DRAWN BY: CEP | | SCALE: 2:1 | |
| | | CHECKED BY: RW | | FILE NAME: SD1490X3.DGN | |
| | | APPROVED BY: RAS | | THIS DRAWING CONTAINS INFORMATION THAT IS PROPRIETARY TO MOLEX INC. AND SHOULD NOT BE USED WITHOUT WRITTEN PERMISSION. | |
| LTR. REVISIONS | | LTR. REVISIONS | | DIN. SIZE CP C | |