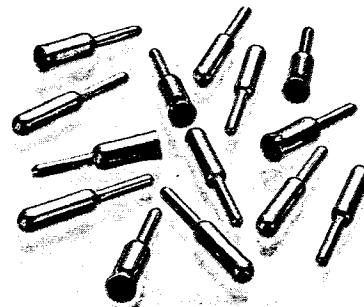
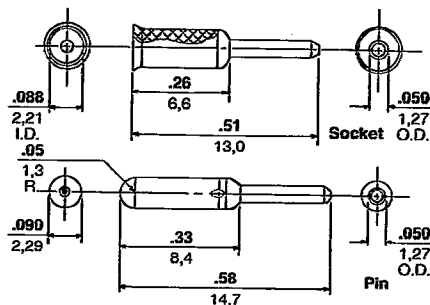


Pin and Socket Wafers and Terminals



1840 Series Used with 1840 and 3099 Series Housings Discrete Terminals



Ordering Information

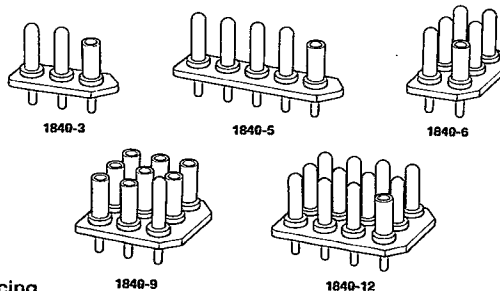
Engineering No.	Type	Tin Plating Order No.	Gold Plating Order No.
1840-A1B	Socket (Female)	• 16-06-0001	Consult Factory
1840-A2B	Pin (Male)	• 16-06-0002	Consult Factory

Wafercon® Base & Terminal Assemblies

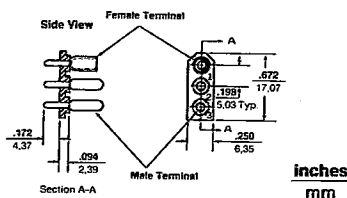
- 3, 5, 6, 9 & 12 circuits available
- Tin or gold plated terminals*
- Mates with Molex standard .093" (2,36mm) diameter standard receptacles
- Available in shrouded (in some circuit sizes) version for additional stability
- Wafers pre-assembled with male, female or voids in any pattern
- May be used with 3099 Series as a board-to-board connector

These pre-assembled wafers helps save time and labor in production, testing and servicing.

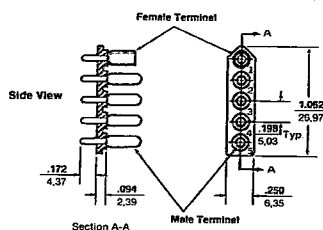
The assembly is ready to be placed on the printed circuit boards and soldered. An intermix of male and female terminals assures error-free connections and positive polarity. *Recommended .008 stock mating terminal without high pressure dimple or 7238/female terminal in mating housing.



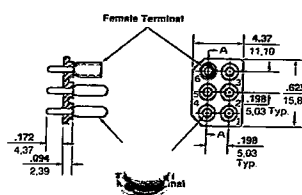
1840-3 Mates with 1395R1 Receptacle Order No. 03-09-1032



1840-5 Mates with 1353R1 Receptacle Order No. 03-09-1052



1840-6 Mates with 1261R2 Receptacle Order No. 03-09-1063

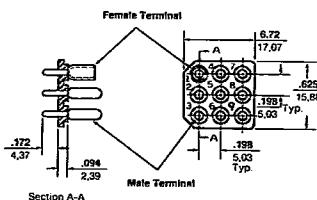


ENG. NO.	ORDER NO.	TERMINAL PATTERN*		
		1	2	3
A-1840-3-2	• 09-18-5031	F	M	M
1840-03A1A1	• 03-04-4031	B	B	B

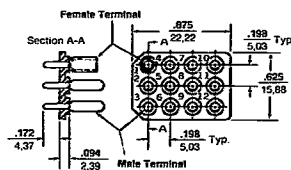
ENG. NO.	ORDER NO.	TERMINAL PATTERN*				
		1	2	3	4	5
A-1840-5-0	• 09-18-5051	F	M	M	M	M
1840-05A1A1	• 03-04-4051	B	B	B	B	B

ENG. NO.	ORDER NO.	TERMINAL PATTERN*					
		1	2	3	4	5	6
A-1840-6-4	• 09-18-5061	M	M	M	M	M	F
A-1840-6-10	• 09-18-5069	F	M	M	M	M	M
1840-06A1A1	• 03-04-4061	B	B	B	B	B	B

1840-9 Mates with 1292R2 Receptacle Order No. 03-09-1092



1840-12 Mates with 1360R1 Receptacle



1840 Technical Data:

Electrical Characteristics:

Contact Resistance - 3 MV @ 1 amp

Temperature Range - -40°F to 221° F (-40° C to 105° C)

Rated Voltage, Currents - Maximum voltage: 250V ac, 5 amps per circuit. Current rating varies somewhat in the particular variations.

ENG. NO.	ORDER NO.	TERMINAL PATTERN*								
		1	2	3	4	5	6	7	8	9
A-1840-9-2	• 09-18-5091	M	M	F	M	M	M	M	M	M
A-1840-9-12	• 09-18-5094	F	M	M	M	M	M	M	M	M
1840-09A2A1	• 03-04-4091	B	B	B	B	B	B	B	B	B

ENG. NO.	ORDER NO.	TERMINAL PATTERN*											
		1	2	3	4	5	6	7	8	9	10	11	12
A-1840-12-1	• 09-18-5126	M	M	F	M	M	M	F	M	M	M	M	F
A-1840-12-2	• 09-18-5121	F	M	M	M	M	M	M	M	M	M	M	M
A-1840-12-3	• 09-18-5127	M	M	F	M	M	M	M	M	M	M	M	M
1840-12A2A1	• 03-04-4121	B	B	B	B	B	B	B	B	B	B	B	B

*M = Male terminal
F = Female terminal
B = No terminal

Polarization accomplished through intermix of male and female terminals
• U.S. Standard Product, available through Molex franchised distributors.
For other configurations, contact factory

