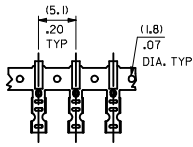
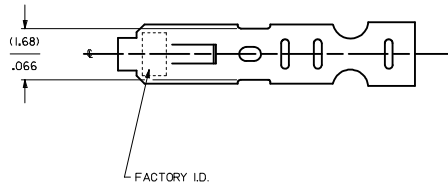
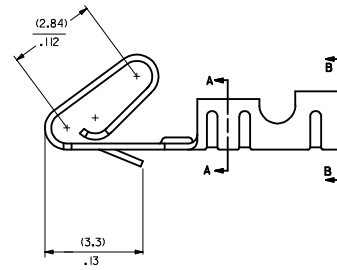
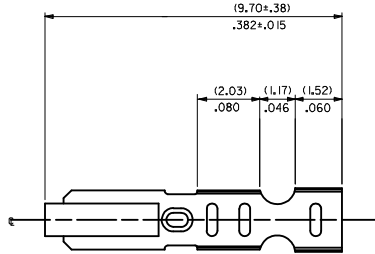
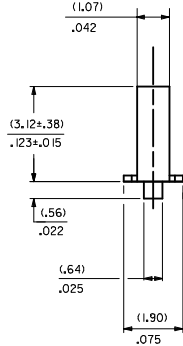
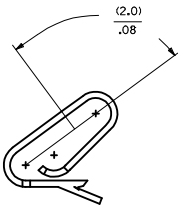


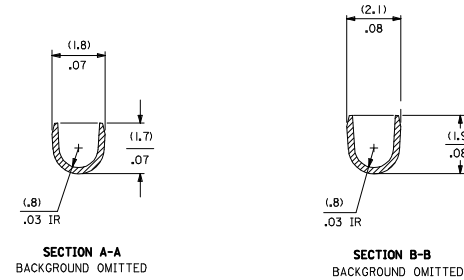
CARRIER VIEW



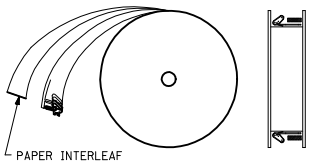
SELECT GOLD LOCATION



- NOTES
1. MATERIAL:
(0.203-0.010)/.0080+.0004 THICK PHOS BRONZE
 2. FINISH:
122 - OVERALL TIN: (0.00381)/.000150 MIN. TIN OVER
(0.00076)/.000030 MIN NICKEL
224 - OVERALL TIN: (0.00508)/.000200 MIN. TIN OVER
(0.00127)/.000050 MIN NICKEL
231 - SELECT GOLD: (0.00076)/.000030 MIN.
SELECT TIN: (0.00254)/.000100 MIN.
OVERALL NICKEL UNDERPLATE: (0.00127)/.000050 MIN.
#P909 - OVERALL HOT TIN DIP: (0.00254)/.000100 MIN.
550 - SELECT GOLD: (0.000381)/.000015 MIN.
OVERALL GOLD FLASH: (0.00005)/.000002 MIN.
OVERALL NICKEL UNDERPLATE: (0.00076)/.000030 MIN.
555- SELECT GOLD: (0.000381)/.000015 MIN.
OVERALL NICKEL UNDERPLATE: (0.00076)/.000030
558 - SELECT GOLD: (0.00076)/.000030 MIN.
OVERALL GOLD FLASH: (0.00005)/.000002 MIN.
OVERALL NICKEL UNDERPLATE: (0.00127)/.000050 MIN.
561- SELECT GOLD: (0.00076)/.000030 MIN.
OVERALL NICKEL UNDERPLATE: (0.00127)/.000050
*THE PRIMARY SHIPPING CARTON WILL BE LABELED "COMPLIANT TO RoHS
DIRECTIVE 2002/95/EC AND ELV ANNEX II OF DIRECTIVE 2000/53/EC."
CARTONS WITHOUT THIS LABEL MAY CONTAIN PRODUCT WITH TIN-LEAD PLATING.
 3. PRODUCT SPEC: PS-10-07
 4. PACKAGING SPECIFICATION: NONE
 5. CRIMP IS FOR 22-30 GA WIRE WITH (157)/.062 DIA INSULATION MAX.
 6. INSERTION FORCE OF TERMINAL INTO (2.54)/.100 CENTERLINE CONNECTOR IS 2.5 LBS. MAX
 7. TERMINALS WILL RETAIN 8 LBS PULL FOR 1 MIN. IN A (2.54)/.100 CENTERLINE HOUSING.
 8. DIMENSIONS GIVEN ACROSS CENTERLINES ARE SYMMETRICAL ABOUT THOSE CENTERLINES
WITHIN HALF THE TOTAL TOLERANCE.
 9. THIS PART CONFORMS TO CLASS B REQUIREMENTS OF COSMETIC SPECIFICATION PS-45499-002



WINDING DETAIL A



6459-(****)*
FORM
L=LOOSE
A=CHAIN PER DETAIL A
PLATING
SEE NOTE 2

CORRECT MATERIAL IEC NO: UCF2009-0674 DRAWN BY: DRWNK/PPER CHYK/SOUSEK APPROV:FSM/TH 2008/09/18 2008/09/29 2008/09/29	QUALITY SYMBOLS	GENERAL TOLERANCES (UNLESS SPECIFIED)	DIMENSION STYLE	SCALE	DESIGN UNITS	THIRD ANGLE PROJECTION
	=0 =0	mm INCH 4 PLACES ± --- ± --- 3 PLACES ± --- ± .005 2 PLACES ± 0.13 ± .010 1 PLACE ± 0.25 ± --- ANGULAR ±1/2°	IN/MM DRAWN BY: SAMIEC CHECKED BY: DATE PATEL APPROVED BY: DATE ENZ 01/21/92	---	INCH	TITLE: CRIMP TERMINAL 22-30 GA WIRE SAME AS 2759 EXCEPT MATL MOLEX INCORPORATED DOCUMENT NO. SD-6459
	DRAFT WHERE APPLICABLE MUST REMAIN WITHIN DIMENSIONS	MATERIAL NO. SEE CHART SIZE D THIS DRAWING CONTAINS INFORMATION THAT IS PROPRIETARY TO MOLEX INCORPORATED AND SHOULD NOT BE USED WITHOUT WRITTEN PERMISSION	SHEET NO. 1 OF 2			

6459-(****)*									
PART NO.	ENG. NO.	PART NO.	ENG. NO.	PART NO.	ENG. NO.	PART NO.	ENG. NO.	PART NO.	ENG. NO.
08-52-0101	6459-(P909)								
08-52-0123	6459-(P909)IL								
08-65-0801	6459-(561)								
	6459-(561)IL								
08-52-0118	6459-(224)								
	6459-(224)IL								
08-52-0121	6459-(122)								
08-52-0122	6459-(122)IL								
08-65-0811	6459-(558)								
08-65-0812	6459-(558)IL								
08-65-0815	6459-(555)								
08-65-0816	6459-(555)IL								
08-65-0813	6459-(550)								
08-65-0814	6459-(550)IL								
08-65-0817	6459-(231)								
08-65-0818	6459-(231)IL								

REMOVE 6459-(999) REC NO: UCP/2008-2190 DRW: WADERR 2008/03/17 CHKD: SCHMIDT 2008/03/18 APPR: FSK/TH 2008/03/24	QUALITY SYMBOLS ▽=0 ▽=0	GENERAL TOLERANCES (UNLESS SPECIFIED) <table border="1"> <thead> <tr> <th></th> <th>mm</th> <th>INCH</th> </tr> </thead> <tbody> <tr> <td>4 PLACES</td> <td>± .005</td> <td>± .0005</td> </tr> <tr> <td>3 PLACES</td> <td>± .005</td> <td>± .0005</td> </tr> <tr> <td>2 PLACES</td> <td>± 0.13</td> <td>± .010</td> </tr> <tr> <td>1 PLACE</td> <td>± 0.25</td> <td>± .010</td> </tr> </tbody> </table> ANGULAR ± 1/2°		mm	INCH	4 PLACES	± .005	± .0005	3 PLACES	± .005	± .0005	2 PLACES	± 0.13	± .010	1 PLACE	± 0.25	± .010	DIMENSION STYLE IN/MM	SCALE --- INCH	DESIGN UNITS INCH	THIRD ANGLE PROJECTION
		mm	INCH																		
	4 PLACES	± .005	± .0005																		
	3 PLACES	± .005	± .0005																		
2 PLACES	± 0.13	± .010																			
1 PLACE	± 0.25	± .010																			
DRAWN BY SAMIEC	DATE 01/21/92	CHECKED BY PATEL	DATE 01/21/92	APPROVED BY LENZ	DATE 01/21/92	TITLE CRIMP TERMINAL 22-30 GA WIRE SAME AS 2759 EXCEPT MATL															
MATERIAL NO. SEE CHART	DOCUMENT NO. SD-6459	MOLEX INCORPORATED	SHEET NO. 2 OF 2	THIS DRAWING CONTAINS INFORMATION THAT IS PROPRIETARY TO MOLEX INCORPORATED AND SHOULD NOT BE USED WITHOUT WRITTEN PERMISSION																	